

Panel with render

Full height EPS blocks, thickness as shown below.

Bare panel as manufactured

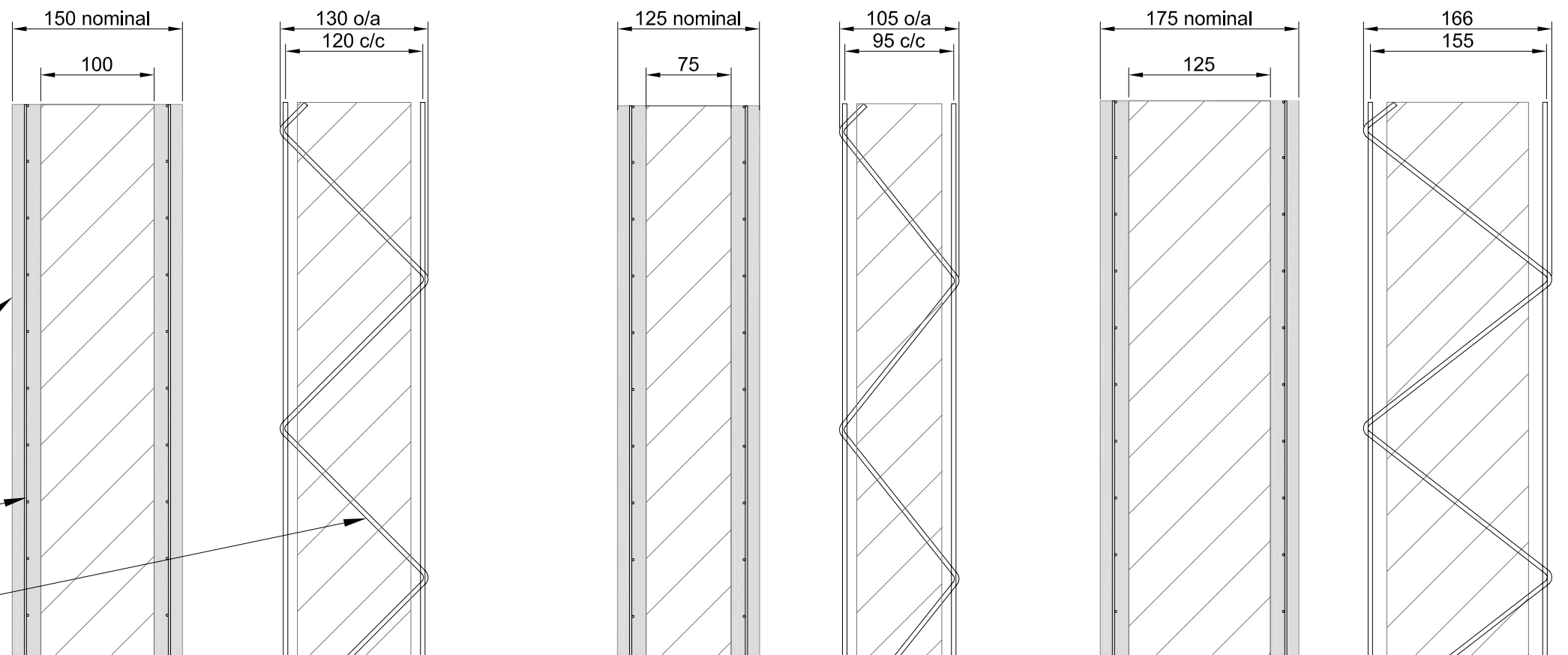
Horizontal panel sections (1:5 @ A3)

Vertical sections through general use wall panel (1:20 @ A3)

Render: 1 part cement, 4 sand (or as otherwise determined).

Welded wire mesh: galvanized 2mm wires @ 50 crs vertical & horiz.

Welded wire trusses @ 150 crs, galvanized 3.5mm wires for chords & web members.



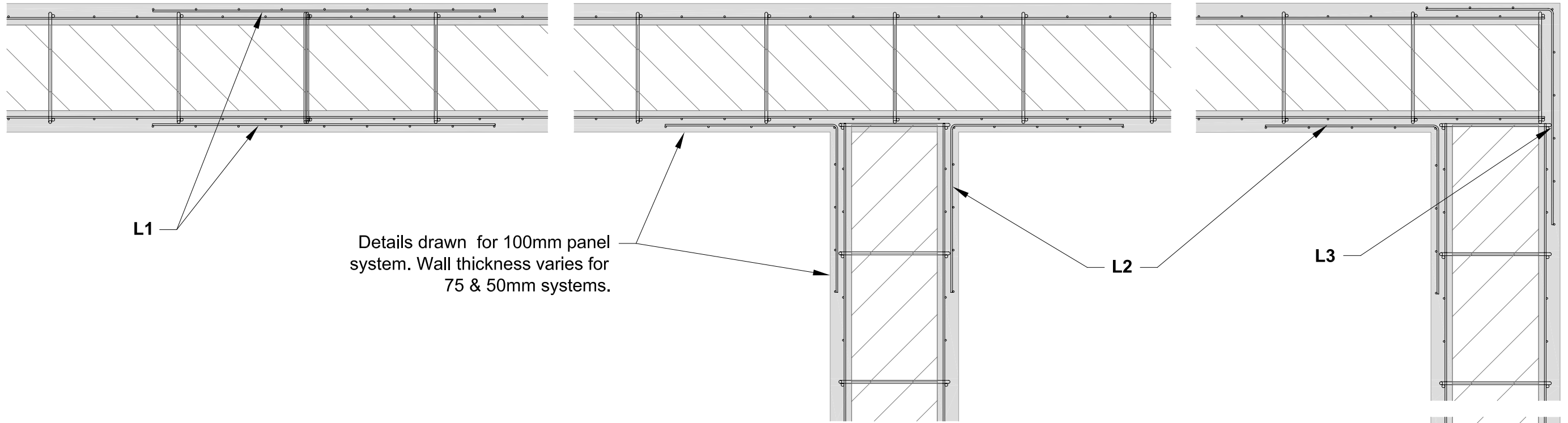
100 mm system

75 mm system

125 mm system

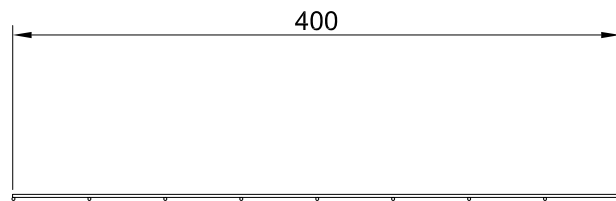
Vertical detail sections (1:5 @ A3)

ASSOCIATED CONSULTANTS	Designed	JMF		D	Thicknesses amended	JMF	16-4-09	STANLEY AND PARTNERS Pty Ltd Consulting Engineers 23 Loraine Street, Capalaba - PO Box 533, Capalaba Q 4157 T: 3245-1148 F: 3390-1654 E: mail@spcivil.com	Project VolcanWall panel system for Australian use	Drawing Title typical panel sections & details		
	Drawn	JMF		C	Three thicknesses	JMF	25-02-09			Client VolcanWall Australia Pty Ltd	Job reference 1496	Drawing no. 01
	Checked			B	Thinner section added	JMF	18-02-09	Approved <i>[Signature]</i> RPEQ 0835 DATE				
				A	Preliminary issue	JMF	17-02-09					
				Issue	Reason	By	Date					



Details drawn for 100mm panel system. Wall thickness varies for 75 & 50mm systems.

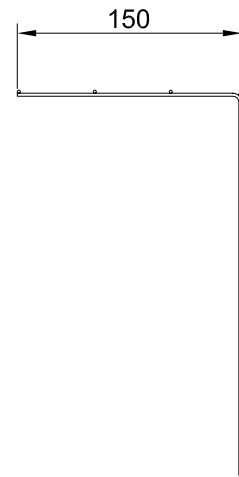
Horizontal detail sections



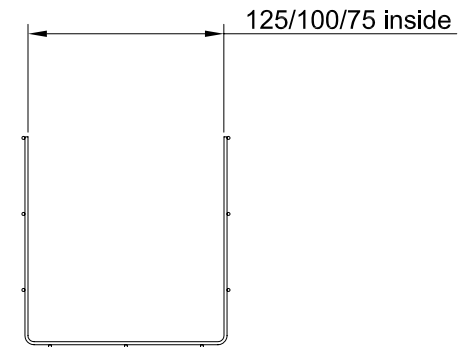
Straight mesh lapping piece: L1



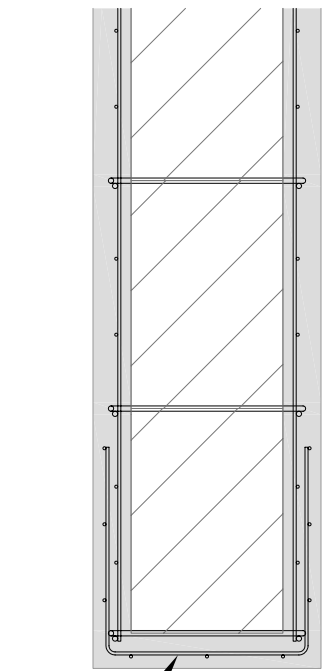
Internal corner lapping piece: L2



External corner lapping piece: L3



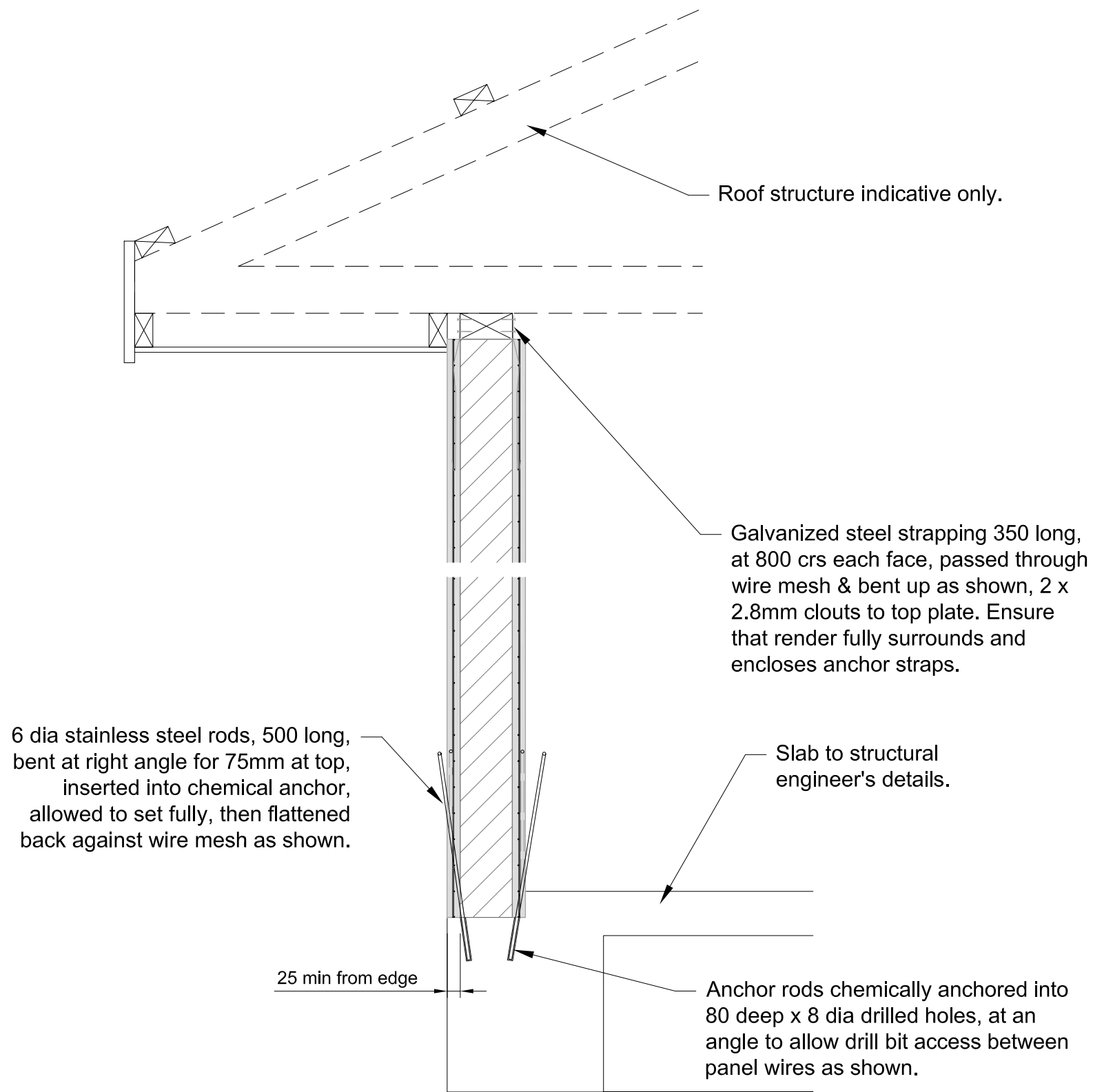
End capping piece: L4



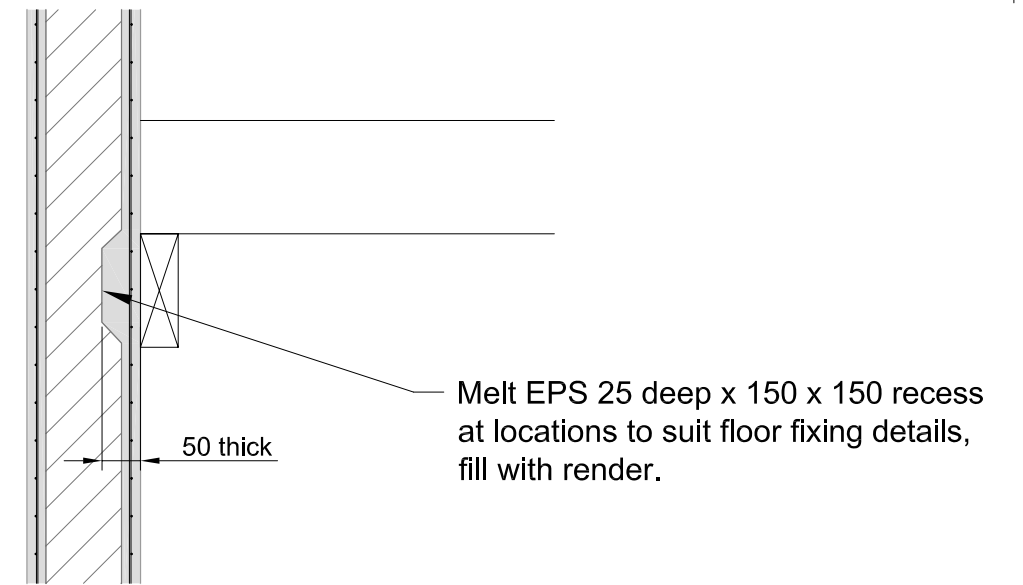
L4

Lapping pieces: 2mm wires @ 50 each way, 400 wide strips folded as shown (note inside & outside faces).

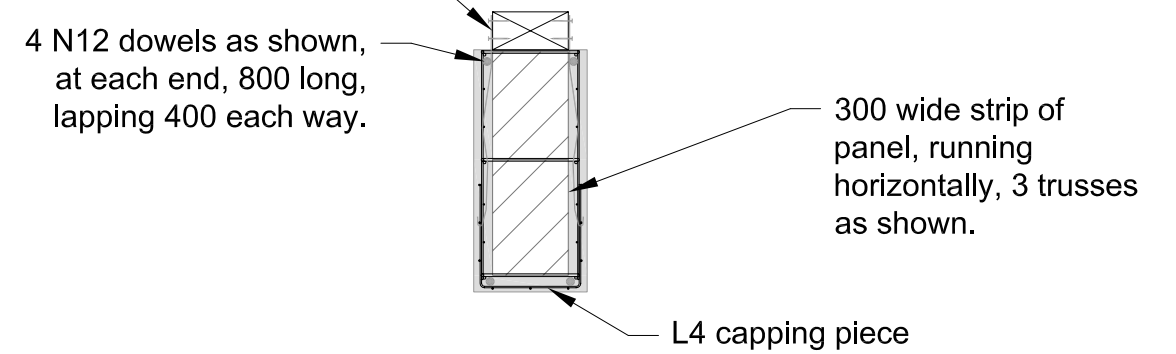
ASSOCIATED CONSULTANTS	SCALE 1:5 @ A3					STANLEY AND PARTNERS Pty Ltd Consulting Engineers 23 Loraine Street, Capalaba - PO Box 533, Capalaba Q 4157 T: 3245-1148 F: 3390-1654 E: mail@spcivil.com Approved <i>[Signature]</i> RPEQ 0835 DATE	Project VolcanWall panel system for Australian use	Drawing Title Typical panel connection details			
	Designed	JMF	B	Minor amendments	JMF		25-02-09	Client VolcanWall Australia Pty Ltd	Job reference	Drawing no.	Issue
	Drawn	JMF	A	Preliminary issue	JMF		18-02-09	1496	02	B	
	Checked		Issue	Reason	By	Date					



Edge detail showing top plate attachment and panel base fixing detail. (1:10 @ A3)



Render thickening detail for attachment of timber or steel floor structure (1:10 @ A3)



Lintel detail 2.4m span (1:10 @ A3)

ASSOCIATED CONSULTANTS	Scale	1:5	C	Top plate, lintel & anchors amended	JMF	1-04-09	STANLEY AND PARTNERS Pty Ltd Consulting Engineers 23 Loraine Street, Capalaba - PO Box 533, Capalaba Q 4157 T: 3245-1148 F: 3390-1654 E: mail@spcivil.com	Project	VolcanWall panel system for Australian use			Drawing Title	Edge details		
	Designed	JMF		B	Additional details & lintel added	JMF			25-02-09	Client	VolcanWall Australia Pty Ltd			Job reference	Drawing no.
	Drawn	JMF	A	Preliminary issue	JMF	18-02-09	Approved	RPEQ 0835	DATE		1496 03 C				
	Checked		Issue	Reason	By	Date									